

MINI CIGARETTE

USER'S MANUAL



**Please read this User'S manual completely before use
please keep this manual in good condition for possible future reference**

- Congratulations and thank you for purchasing the Mini Electronic Cigarette.
 - Now you can start a new beginning for a healthier lifestyle, which also creates an environmental friendly livign space for your family and friends.
 - Please read this manual carefully before using the product in order to fully and prudently use it in accordance with the requirements herein.
- **Special Notice:**
1. To avoid over frequent usage of the product, once smoke it for sixteen times within one minute, the indicator light will continuously flash ten times(about four seconds) for reminding.
 2. If every time the user inhales more than five seconds, the light will continuously flash 10 times (about four seconds) tips do not affect normal use.
 3. If the indicator light will continuously flash for 30 times(about nine seconds), Please replace the battery components with a fully charged.

Content

Components of the product	1
Product introduction	2
Notices to use	3
Cautions.....	4
Description of the product.....	5-7
How to use	8-12
Suitable user and forbidden user.....	13
Troubleshooting.....	14
Instructions to atomized cartridge	15-17
How to abstain from smoking by using this product?	18

Components of the product



1 ||

Product Introduction

The Mini Electronic Cigarette is a nonflammable electronic atomizing device, adopts the advanced microelectronic technology and supercritical physical atomized technology, to atomize the high-purity nicotine diluent, which is extracted from tobacco and has the exciting function, so that smoker can take it in. The liquid in the cartridge contains nicotine, perfumery compound special for cigarette and ordinary food additives. It's provided with efficacies similar to those of the ordinary cigarette. It can refresh the smokers and satisfy their smoking addiction, making them happy and relaxed, so as to relief the suffering of quitting smoking. The essential differences between the Mini Electronic Cigarette and the ordinary cigarettes are as follows:

1. No tar and other carcinogenic substance or harmful ingredients to human body.
2. No ignition required, without the danger hence will not lead to the of over 4000 chemical substance produced by the ordinary cigarettes, like carbon monoxide.
3. Harmless to other and the environment, without the danger of second-hand smoking.
4. No possibility to cause fire. It can be used safely in most No-smoking places.
5. According to the smoke-quitting procedure, the target of quitting smoke can be reached nonpainfully within a certain period of time.

|| 2

Notices to use

1. The special components must be used and the proper operation procedures must be followed to prevent any unnecessary malfunction and damage of the product, such as cartridge, battery components, charger and power line.
2. Replace the cartridge with a new one as the smoke volume is reduced.
3. If the indicator light will continuously flash for 30 times (about nine seconds), Please replace the battery components with a fully charged.
4. The charger can work in a normal condition with the voltage at AC 100V-240V, 50/60Hz, or DC 6-24V.
5. Keep the Mini Electronic Cigarette separated from other articles and avoid collision.
6. The Mini Electronic Cigarette is completely free from second-hand smoking, absolutely harmless to the surrounding people and the environment. It never needs to be lighted and is without the hidden danger of fire accident. So it can be safely used in public places.
7. After finishing the Four-step method for quitting smoking, it is forbidden to use the cartridge containing nicotine. If you use it continuously, it's better to use the cartridge without nicotine.
8. Once some problem occurs in this product, please have it repaired in the designated repair sites, and don't dismantle it by yourself, which will bring damages to it and endanger yourself.

3 ||

Cautions

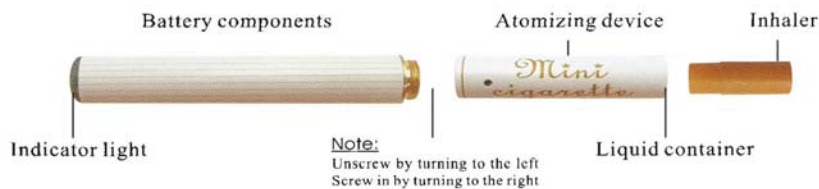
1. Keep it away from high temperature environment in use or storage.
2. Keep it and its special components out of children's reach, and avoid improper operation.
3. For people with adverse reaction after using this product, it is recommended to use the cartridge with lower nicotine content or no nicotine.
4. Please protect mucous membrane from direct contact with the nicotine liquid contained in the atomized cartridge.
5. Please properly keep the charged battery components, and prevent it from mixing with metal articles in your pocket, wallet or other bags. The conductors can bring about short circuit, heating or damages to the battery components.
6. It's better to use the Mini Electronic Cigarette smoking accordant to the time and frequency of smoking a ordinary cigarette.
7. Please strictly abide by relevant local laws and regulations on driving. Don't use the Mini Electronic Cigarette while driving, and keep it properly to avoid damages to it caused by collision.
8. When try to clean the charger, you must unplug it from the power supply beforehand. It is absolutely prohibited to handle the charger outdoors or in a damp environment.

4

Description of the product

1. Structure of the Mini Electronic Cigarette body

The Mini Electronic Cigarette body is composed of atomizing device, microcomputer controlled circuit and lithium battery components. An operating mode indicator light at tip of the battery components.



5

Description of the product

2. Atomized cartridge

The atomized cartridge is composed of an inhaler and a liquid container. The liquid container contains nicotine diluents which are ready to be atomized; it does not contain ingredients harmful to human body, such as tar and carcinogenic substance. The inhaler and liquid container are disposable. According to nicotine content, the atomized cartridges are classified into four kinds: high, medium, low and zero. Cartridge with high, medium or low nicotine content are only used as the substitute for cigarette during the process of smoke abstention, and the cartridge free of nicotine is for long-term use.



6

Description of the product

3. Battery components and Charger

The Mini Electronic Cigarette employs a 3.6V special lithium battery components and special charger, which cannot be replaced by other lithium battery and charger. The input supply voltage of the charger: AC100-240V, 50/60Hz, or DC 6-24V. Attention shall be paid to whether the rated value of local supply voltage is accordant to that of this charger or not during traveling. The circulatory using frequency of the battery components will be no less than 300 times.



7

How to use

Installation method:

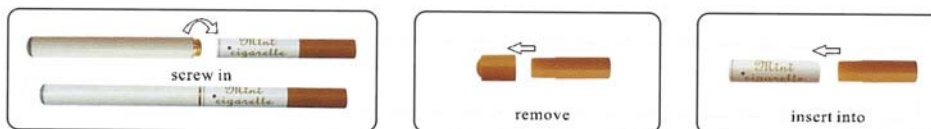
Step1: Screw in the battery components at the front of the atomizing device by turning it right;

Step2: Unpack the cartridge and remove the sealed cap of the liquid container;

Step3: Put the cartridge into the atomizing device, then you can enjoy it.

Stand-by state:

After you screw the fully charged battery components into the atomizing device, and insert the cartridge into it, the Mini Electronic cigarette will be in the stand-by state. The cartridge fixed into is better to be used out within two weeks.



8

How to use

Operating mode:

The electronic circuit will start to work as the Mini Electronic Cigarette is inhaled by mouth. And the indicator light at tip of the product will be lit simultaneously. Stop inhaling will terminate the atomization, and the operating mode will turn to standby state. It is recommended to place it horizontally and don't keep it upwards, so as to prevent you from inhaling the liquid into your mouth, which many cause stimulus to your oral mucosa.

Smoking method:

Smokers smoke each ordinary cigarette by 14-16 mouthfuls, so after smoking 14-16 mouthfuls (equal to an ordinary cigarette) of the atomized cartridge, smoker should stop smoking about half an hour before smoking again.

9

How to use

Special Notice:

1. To avoid over frequent usage of the product, once smoke it for sixteen times within one minute, the indicator light will continuously flash 10 times (about four seconds) for reminding.
2. If every time the user inhales more than five seconds, the light will continuously flash 10 times (about four seconds) tips do not affect normal use.
3. When the indicator light is continuously flash for 30 times (about nine seconds), it indicates the need to replace the battery components.
4. Internally controlled by a micro-computer program, this device has an automatic cleaning function. When the user inhales for 1500 times in accumulation, the indicator light at tip of the Battery components will shine continuously for 20 seconds, which shows that the computer Controlled program is automatically carrying out the cleaning task on this device.

110

How to use

Directions for the use of battery components and charger

In case the indicator light flashes, recharge the battery components with the accompanying charger. Please screw in the battery components into the charger. Three or four hours later, the battery components is fully charged when the indicator light turns green from red. Take out the battery components and cut off the charger's power supply. (The original set does not contain the car charger power plug, which can be bought separately if needed.)

When the battery components fully screw into the charger, The indicator light is continuously flash 10 times (about five seconds) tips, and the indicator light on the charger turns red from green into the start of charging.



Charging with common charger



Charging with car charger

111

How to use

Precautions for use of battery components and charger:

1. Keep the battery components away from high temperature source while charging.
2. Don't connect anode and cathode of the battery components with metal, to prevent short circuit.
3. Do not weld the battery components directly and pierce through the battery with nails or other edge tool.
4. In case of battery's leakage happens, if your eye contacts with electrolyte leaking from the battery, Don't rub it. Please wash it with clean water immediately and ask for doctor's help.
5. If the battery components peculiar smells, burns, changes color, deforms or any other unusual case happen during charging, cut off the power supply, and take the battery components out from the device or charger and stop using.
6. The charger can be used for the special lithium battery components of the Mini Electronic Cigarette only; please don't attempt using this charger to charge other types of batteries.
7. The first charging must be kept for 8 hours, and the normal charging time should be 3-4 hours.
8. If the Mini Electronic Cigarette is not to be used for a long period of time, take the battery components out from the device or charger. Keep the battery components stored alone in a low Temperature and dry place after fully charged.

112

1. Suitable user

- The people who have been smoking for a long period of time, and suffering uncomfortable feeling.
- The people working in no-smoking places but with the habit of smoking.
- The smokers who want to quit smoking. Painless smoking abstention can be realized gradually by decreasing nicotine content.

2. Forbidden user

- Minors under 18 years old.
- People without the habit of smoking.
- People sensitive to nicotine or any other ingredients in the inhalant.
- Pregnant and breast feeding women.
- The patients who should avoid smoking.

Troubleshooting

1. When the indicator light is continuously flash for 30 times(about nine seconds), please change a charged battery components.
2. When the smoke volume is reduced, please change a new cartridge.
3. Installing a new cartridge and change a charged battery components, if the indicator light shine only as you inhale, and atomizing device do not work (no smoke), please check the battery components whether screw down.

Note: After the above solution, if the failures still remain or you feel uncomfortable during use, please Stop using immediately, and contact the sales agent or our company.

Instructions to atomized cartridge

About atomized cartridge and nicotine

The atomized cartridge contains nicotine. The nicotine is a kind of natural alkaloid extracted from tobacco leaf or other plants containing nicotine. It is the main substance that makes smokers addicted. When a person is smoking, nicotine comes into the blood and then in just 7-9 seconds, and now smokers will respond with a series of physiological reactions such as happiness. These years, “Nicotine Replacement Therapy” has been demonstrated to be safe and effective way for smoke abstention, according to experts and many clinical experiments. Free from harmful substances such as tar and carbon monoxide, the atomized cartridge can minimize the smoking harms for most smoke-quitters; while at the same time, it can also release the quitter from discomfort reaction during smoke abstention, for it contains just a small quantity of high purity nicotine. The virulence testing of the atomized cartridge by poison test of several authoritative organizations has demonstrated its safety.

Instructions to atomized cartridge

How many cigarettes are equal to one atomized cartridge?

Different smoking habits of individual smoker and various brands of cigarettes result different levels of nicotine contents. For example, usually the marking on ordinary cigarette packet is marked by 1.1mg nicotine, indicating that each cigarette in the box contains 1.1mg nicotine. Thus, one package of ordinary cigarette (20 branches) contains nicotine is equal to $1.1\text{mg} \times 20 = 22\text{mg}$. One atomized cartridge can be sucked is lower than 300 mouthfuls, equivalent to one package of ordinary cigarette (20 branches) approximately. But the nicotine content is lower than ordinary cigarette with the equivalent cigarette potency. According to nicotine content, the atomized cartridges are classified into four kinds: high, medium, low and zero.

HIGH (nicotine content: 18mg)

MED (nicotine content: 14mg)

LOW (nicotine content: 11mg)

NO (nicotine content: 0mg)

16

Instructions to atomized cartridge

Notices for use of cartridge

1. Read the instructions carefully before using the atomized cartridge.
2. The atomized cartridge is the special accessory and must be used with the Electronic Cigarette only.
3. The atomized cartridge is a kind of disposable product, do not reuse. Please dispose of it properly after use, and keep it out of children's reach.

Precautions for use of cartridge

1. Storage: keep in a cool and dry place; Shelf life: 24 months.
2. Please keep it out of children's reach.
3. Please use before the expiry date printed on the package.
4. Do not put it into mouth or contact with mucous membrane.
5. User unsuitable for smoking is not allowed to use this product.
6. Nicotine and atomizing agent in the cartridge shall be prepared strictly in correct proportion; mixing With other liquid is forbidden.

17

How to abstain from smoking by using this product ?

The atomized cartridge is designed according to "Nicotine Replacement Therapy" recommended by World Health Organization (WHO). It will let smokers gradually step-down the quantity of nicotine they absorbed. It is recommended that users try the cartridge starting with the cartridge without nicotine, and then realize the painless abstention via nicotine descending method as long as finding out the suitable nicotine content.

Four-step method of abstention from smoking:

- Step 1: Use the cartridge with high nicotine content for 6 weeks by normal smoking habit;
Step 2: Use the cartridge with medium nicotine content for 12 weeks by normal smoking habit;
Step 3: Use the cartridge with low nicotine content for 4 weeks by normal smoking habit;
Step 4: Finally, use the cartridge without nicotine for 2 weeks to achieve the goal of smokeabstention.

This method applies to people who have strong desire to quit smoking. The feeling and time of every step may be different according to different people.

18

Specifications

Model Number	DSE901
Power source	DC 3.6V (lithium battery components)
Dimensions	119.5(L) x9.3(D)mm
Weight	15g (with battery components)



FARSEE TECHNOLOGY CO., LIMITED

Tel: 0086-755-21966705

Fax: 0086-755-86003005

E-mail: info@farseegroup.com

MSN: mailgrant@hotmail.com

Skype: farseegroup

<http://www.farseegroup.com>